

adore<sup>®</sup>

# REGENT

SOLID RIGID CORE

**MONARCH**  
premium click down planks & tiles

**MONARCHX**  
featuring an attached pad

**SOVEREIGN**  
commercial click down flooring



WATERPROOF • LIFEPROOF • FOOLPROOF

ADORE<sup>®</sup> REGENT<sup>™</sup> SOLID RIGID CORE...RISE ABOVE THE STANDARD.





adore.  
REGENT

Adore® Floors, a leader in flooring industry innovation, introduces Regent™ Solid Rigid Core, a new flooring category that raises the standard in beautiful, high performance resilient flooring.

Regent™ Solid Rigid Core is constructed on a single, homogeneous platform that unites impressive visuals with unprecedented strength, dimensional stability and damage resistance to create an outstanding solution for commercial and residential installations.

Regent™ Solid Rigid Core combines a high polymer content with today's most popular visuals. Melded under heat and pressure into solid planks, Regent's™ manufacturing process results in a flooring product with a density much greater than that of traditional composites, superior indentation resistance, true topical waterproofing and greater overall dimensional stability.

REGENT™ SOLID RIGID CORE...RISE ABOVE THE STANDARD.

MONARCH | MONARCHX | SOVEREIGN



# WATERPROOF CORE



Regent™ Solid Rigid Core is waterproof -- perfect for installation in bathrooms, kitchens, foyers and areas where topical moisture can present problems.

In the face of normal water-related hazards such as flooding, overflows and leakage, Regent™ will not swell but instead maintains its original appearance through superior dimensional stability.

Even Regent's™ acoustical layer is waterproof. The high quality polymer based closed cell pad is resistant to water damage, mold and mildew and outperforms other pad options in its category.

Regent™ Solid Rigid Core offers an outstanding solution for spaces that require additional fortification against the damaging effects of water and moisture and Monarch, Monarch X, and Sovereign carry a lifetime waterproof warranty.

REGENT™ IS WATERPROOF!





# ENGINEERED LIFEPROOF

The density of Regent™ Solid Rigid Core is much greater than that of traditional composite flooring. The result is enhanced dimensional stability, damage resistance and indentation resistance.

Regent's advanced composition allows for installation over radiant heat and in areas where the floors are exposed to sunlight. Plus, with surfaces fortified by Adore®'s Duramond® technology, Regent™ is pet friendly, stands up to dirt, drops and spills and is resistant to the wear-and-tear of everyday living.

Engineered with over 40 years of manufacturing experience, Regent™ Solid Rigid Core works with your life.

Scratch Resistant  
Scuff Resistant  
Temperature Durable  
Pet Proof  
Drop Proof  
Easy to Clean  
Easy to Maintain...

**REGENT™ IS LIFEPROOF!**







# FOOLPROOF INSTALLATION

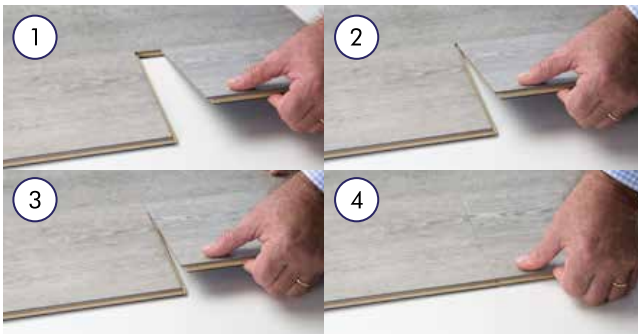


Regent™ Solid Rigid Core is the fastest, most secure and easiest click (glueless) installation in its category.

All Regent™ offer a strong, stable, easy-to-click I4F 3L Angle-Drop locking system.

Regent's™ density nearly eliminates telegraphing and allows for installation over existing floors including concrete, hardwood, ceramic and vinyl. Additionally, the superior dimensional stability significantly improves heat and light resistance and requires no pre-installation acclimation time in moderate temperature zones\*.

Rigidity, squareness and accurate profiling make installation without the use of transitional strips possible in large expanses (up to 4000 ft<sup>2</sup> or 63 linear feet). Plus, the very structure of the product facilitates the installation speed and process.



REGENT™....FAST, SECURE, FOOLPROOF!



\*Moderate temperatures = 50 - 90° F, 10 - 33° C

# 3

PRODUCT  
LINES

## COMMERCIAL & RESIDENTIAL

MONARCH | MONARCH X | SOVEREIGN

Regent™ floors share the same beautiful visuals over 3 separate product lines specifications: Monarch, Monarch X and Sovereign.

Monarch & Monarch X: 5.9" x 48.0", 150 mm x 1220 mm, 3.8 mm core gauge with angle-drop click locking system suitable for home, multi-residential and light commercial use. Monarch X offers the attached 1 mm IXPE acoustic pad option, bringing its total gauge to 4.8mm overall.

Sovereign: 7" x 48", 181 mm x 1220 mm, 6 mm gauge with the fast, secure angle-drop locking system, comes standard with the attached 1.5 mm IXPE acoustical underlayment and is suitable for everything from home to full commercial use.

Regent™ products are FloorScore® certified, orthophthalate free and 100% recyclable.



COMFORTABLE, WARM AND QUIET UNDERFOOT, ADORE® REGENT™ OFFERS THE INDUSTRY'S BEST ACOUSTIC UNDERLAYMENT PAD



The unique uniform micro closed-cell technology offers a water proof backing that is mold and mildew resistant and provides for:

- GREATER SOUND ABSORPTION
- SUPERIOR SHOCK ABSORPTION
- STABILITY & RESILIENCE
- SUPERIOR INSULATION
- DECREASED TELEGRAPHING
- MOISTURE RESISTANCE
- ANTIBACTERIAL RESISTANCE
- MOLD & MILDEW RESISTANCE



## FAIRBRIGHT OAK

---

MONARCH MON-N626 | MONARCH X MON-X626 | SOVEREIGN SOV-X626



## KNOTTED HEARTWOOD

---

MONARCH MON-N607 | MONARCH X MON-X607 | SOVEREIGN SOV-X607



## WHEATON GOLD

---

MONARCH MON-N604 | MONARCH X MON-X604 | SOVEREIGN SOV-X604



## SALTED OAK

---

MONARCH MON-N608 | MONARCH X MON-X608 | SOVEREIGN SOV-X608



## NORSE COUNTRY BARK

---

MONARCH MON-N620 | MONARCH X MON-X620 | SOVEREIGN SOV-X620



## SMOKED CYPRESS

---

MONARCH MON-N602 | MONARCH X MON-X602 | SOVEREIGN SOV-X602



## CINDERED COBALT

---

MONARCH MON-N629 | MONARCH X MON-X629 | SOVEREIGN SOV-X629



## RIVERBANK GRAY

---

MONARCH MON-N606 | MONARCH X MON-X606 | SOVEREIGN SOV-X606



## SUMMER STORM

---

MONARCH MON-N628 | MONARCH X MON-X628 | SOVEREIGN SOV-X628



## SEASIDE MYRTLE

---

MONARCH MON-N622 | MONARCH X MON-X622 | SOVEREIGN SOV-X622





## RUFFLED DOVE

---

|           |          |
|-----------|----------|
| MONARCH   | MON-N631 |
| MONARCH X | MON-X631 |
| SOVEREIGN | SOV-X631 |

## SEASONED KHAKI

---

|           |          |
|-----------|----------|
| MONARCH   | MON-N632 |
| MONARCH X | MON-X632 |
| SOVEREIGN | SOV-X629 |



## LUMINOUS IVORY

---

|           |          |
|-----------|----------|
| MONARCH   | MON-N633 |
| MONARCH X | MON-X633 |
| SOVEREIGN | SOV-X633 |

## DIAMOND STEEL

---

|           |          |
|-----------|----------|
| MONARCH   | MON-N634 |
| MONARCH X | MON-X634 |
| SOVEREIGN | SOV-X634 |



# REGENT SOLID RIGID CORE SPECIFICATIONS

## SOVEREIGN

commercial click down flooring

7.0" x 48.0" nominal plank dimensions  
 12.0" x 24.0" nominal tile dimensions  
 6.0 mm total thickness  
 4.0 mm core gauge  
 22 mil (0.55mm) wear layer  
 Luxurious 1.5 mm attached IXPE pad  
 Industry-leading click down installation  
 Duramond™ surface enhancement  
 Orthophthalate-free construction  
 100% recyclable after use

Planks - 10 planks / 23.75 ft<sup>2</sup> (nom.)  
 Tiles - 12 tiles / 24.00 ft<sup>2</sup> (nom.)

15 Year Commercial Warranty  
 Lifetime Residential Warranty

## MONARCH<sup>X</sup>

featuring an attached pad.

5.9" x 48.0" nominal plank dimensions  
 12.0" x 24.0" nominal tile dimensions  
 4.8 mm total thickness  
 3.5 mm core gauge  
 12 mil (0.3mm) wear layer  
 Class-leading 1.0 mm attached IXPE pad  
 Industry-leading click down installation  
 Duramond™ surface enhancement  
 Orthophthalate-free construction  
 100% recyclable after use

Planks - 16 planks / 31.51 ft<sup>2</sup> (nom.)  
 Tiles - 16 tiles / 32.00 ft<sup>2</sup> (nom.)

10 Year Light Commercial Warranty  
 Lifetime Residential Warranty

## MONARCH

premium click down planks & tiles

5.9" x 48.0" nominal plank dimensions  
 12.0" x 24.0" nominal tile dimensions  
 3.8 mm total thickness  
 3.5 mm core gauge  
 12 mil (0.3mm) wear layer  
 Industry-leading click down installation  
 Duramond™ surface enhancement  
 Orthophthalate-free construction  
 100% recyclable after use

Planks - 16 planks / 31.51 ft<sup>2</sup> (nom.)  
 Tiles - 16 tiles / 32.00 ft<sup>2</sup> (nom.)

10 Year Light Commercial Warranty  
 Lifetime Residential Warranty

## SPECIFICATION TESTING FOR RIGID SOLID CORE

|                                   | Standard    | Sovereign Result     | Monarch Result       | Monarch X Result     |
|-----------------------------------|-------------|----------------------|----------------------|----------------------|
| Total Thickness                   | ASTM F-386  | 6.0mm                | 3.8mm                | 4.8mm w/pad          |
| Wear Layer Thickness              | ASTM F-410  | 0.55 mm/22 mil       | 0.3mm/12 mil         | 0.3mm/12 mil         |
| Critical Radiant Flux             | ASTM E-648  | Class I              | Class 1              | Class 1              |
| Chemical Resistance               | ASTM F-925  | No change 24 hours   | No change 24 hours   | No change 24 hours   |
| Static Load Limit                 | ASTM F-970  | 1,500 psi            | 1,500 psi            | 1,500 psi            |
| Heat Stability                    | ASTM F-1514 | <8.0 Delta E         | <8.0 Delta E         | <8.0 Delta E         |
| Light Stability                   | ASTM F-1515 | <8.0 Delta E         | <8.0 Delta E         | <8.0 Delta E         |
| Residual Indentation              | ASTM F-1914 | <0.002 Inch          | <0.002 inch          | <0.002 inch          |
| Size Change                       | ISO 23999   | Pass                 | Pass                 | Pass                 |
| Size and Squareness               | ASTM F-2421 | <0.25%               | <0.25%               | <0.25%               |
| Static Coefficient of Friction    | ASTM D-2047 | Meets or exceeds 0.6 | Meets or exceeds 0.6 | Meets or exceeds 0.6 |
| Cupping/Curling                   | ISO 23999   | ≤0.10mm              | <0.05mm              | <0.05mm              |
| Impact Sound Transmission (IIC)   | ASTM E-492  | IIC 63               | IIC 43               | IIC 63               |
| Airborne Sound Transmission (STC) | ASTM E-90   | STC 53               | STC 53               | STC 53               |
| Impact Sound Reduction (ΔIIC)     | ASTM E-2179 | ΔIIC 24              | ΔIIC 10              | ΔIIC 24              |



ADOREFLOORS.COM

877-359-5095 | 631-843-0900